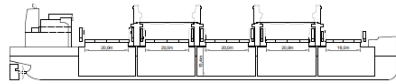
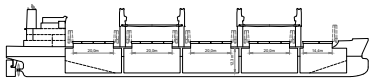


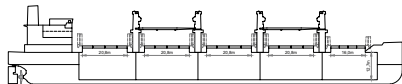
# FLEET OVERVIEW

**BBC URANUS | BBC-40K-30A**


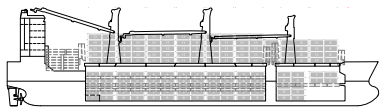
|                  |                |
|------------------|----------------|
| No. of vessels   | 7              |
| Deadweight       | 40,273 mt      |
| Lifting capacity | 4 x 30,5 mt    |
| Cubic capacity   | 1,776,928 cbft |
| Built            | 2022-2025      |


**BBC MERCURY | BBC-40K-30B**


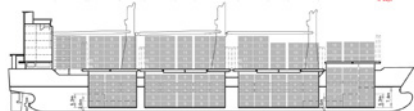
|                  |                |
|------------------|----------------|
| No. of vessels   | 2              |
| Deadweight       | 39,869 mt      |
| Lifting capacity | 4 x 30 mt      |
| Cubic capacity   | 1,761,513 cbft |
| Built            | 2023           |


**EMMA JANNEKE | BBC-40K-30C**


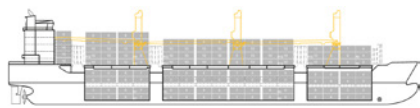
|                  |                |
|------------------|----------------|
| No. of vessels   | 1              |
| Deadweight       | 39,974 mt      |
| Lifting capacity | 4 x 30 mt      |
| Cubic capacity   | 1,707,640 cbft |
| Built            | 2024           |


**HUANGHAI STRUGGLER | BBC-31K-500A**


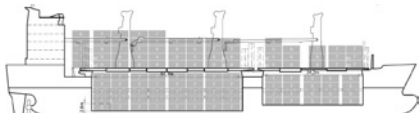
|                  |                       |
|------------------|-----------------------|
| No. of vessels   | 1                     |
| Deadweight       | 31,651 mt             |
| Lifting capacity | 2 x 250 mt + 1 x 80mt |
| Cubic capacity   | 1,375,821 cbft        |
| Built            | 2014                  |


**BBC DENMARK TYPE | BBC-24K-200A**


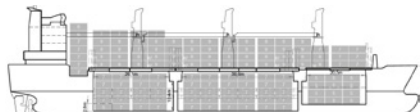
|                  |                       |
|------------------|-----------------------|
| No. of vessels   | 5                     |
| Deadweight       | 24,964 mt             |
| Lifting capacity | 2 x 100 mt + 1 x 60mt |
| Cubic capacity   | 1,067,880 cbft        |
| Built            | 2012-2013             |


**BBC RAINBOW / BBC RAISE TYPE | BBC-18K-160A / B**


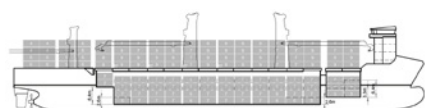
|                  |                    |
|------------------|--------------------|
| No. of vessels   | 7                  |
| Deadweight       | 17,550 / 17,808 mt |
| Lifting capacity | 3 x 80 mt          |
| Cubic capacity   | 901,263 cbft       |
| Built            | 2010-2013          |


**BBC CONGO TYPE | BBC-17K-500A**


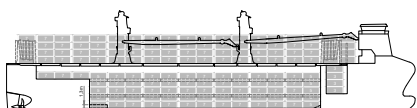
|                  |              |
|------------------|--------------|
| No. of vessels   | 6            |
| Deadweight       | 17,000 mt    |
| Lifting capacity | 2 x 250 mt   |
| Cubic capacity   | 689,429 cbft |
| Built            | 2010-2013    |


**BBC WESER TYPE | BBC-17K-160A**


|                  |              |
|------------------|--------------|
| No. of vessels   | 6            |
| Deadweight       | 17,500 mt    |
| Lifting capacity | 3 x 80 mt    |
| Cubic capacity   | 760,642 cbft |
| Built            | 2006-2009    |

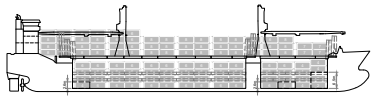

**BBC AMBER TYPE | BBC-14K-800A**


|                  |                        |
|------------------|------------------------|
| No. of vessels   | 13                     |
| Deadweight       | 14,350 mt              |
| Lifting capacity | 2 x 400 mt + 1 x 80 mt |
| Cubic capacity   | 711,236 cbft           |
| Built            | 2010-2016              |

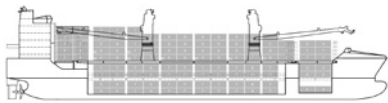

**BBC LEER | BBC-13K-500A**


|                  |              |
|------------------|--------------|
| No. of vessels   | 15           |
| Deadweight       | 13,000 mt    |
| Lifting capacity | 2 x 250 mt   |
| Cubic capacity   | 910,941 cbft |
| Built            | 2024-2026    |

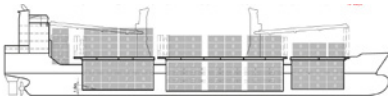


**BBC PERU TYPE | BBC-13K-160A**


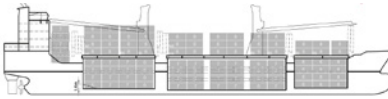
|                  |              |
|------------------|--------------|
| No. of vessels   | 1            |
| Deadweight       | 13,500 mt    |
| Lifting capacity | 2 x 80 mt    |
| Cubic capacity   | 609,425 cbft |
| Built            | 2012         |


**BBC UKRAINE TYPE | BBC-12K-500A / B / C**


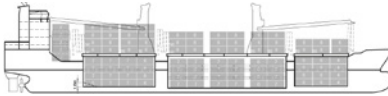
|                  |              |
|------------------|--------------|
| No. of vessels   | 15           |
| Deadweight       | 12,400mt     |
| Lifting capacity | 2 x 250 mt   |
| Cubic capacity   | 621,537 cbft |
| Built            | 2017-2025    |


**BBC OREGON TYPE | BBC-12K-360A**


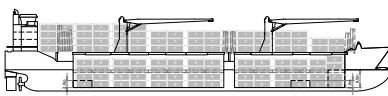
|                  |              |
|------------------|--------------|
| No. of vessels   | 5            |
| Deadweight       | 12,780 mt    |
| Lifting capacity | 2 x 180 mt   |
| Cubic capacity   | 563,340 cbft |
| Built            | 2009-2011    |


**BBC MAINE TYPE | BBC-12K-300A**


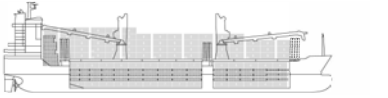
|                  |              |
|------------------|--------------|
| No. of vessels   | 15           |
| Deadweight       | 12,780 mt    |
| Lifting capacity | 2 x 150 mt   |
| Cubic capacity   | 563,340 cbft |
| Built            | 2007-2011    |


**BBC CAMPANA TYPE | BBC-12K-240A**


|                  |              |
|------------------|--------------|
| No. of vessels   | 8            |
| Deadweight       | 12,700 mt    |
| Lifting capacity | 2 x 120 mt   |
| Cubic capacity   | 563,340 cbft |
| Built            | 2004-2007    |


**BBC JADE TYPE | BBC-12K-160A**


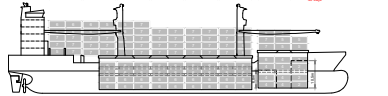
|                  |              |
|------------------|--------------|
| No. of vessels   | 1            |
| Deadweight       | 12,000 mt    |
| Lifting capacity | 2 x 80 mt    |
| Cubic capacity   | 609,424 cbft |
| Built            | 2007         |


**BBC LOUISE TYPE | BBC-11K-500A**


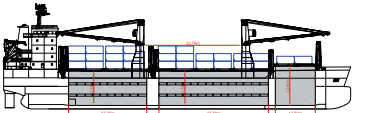
|                  |              |
|------------------|--------------|
| No. of vessels   | 1            |
| Deadweight       | 11,800 mt    |
| Lifting capacity | 2 x 250 mt   |
| Cubic capacity   | 563,782 cbft |
| Built            | 2018         |


**BBC CHALLENGER | BBC-11K-160A**

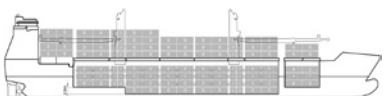

|                  |              |
|------------------|--------------|
| No. of vessels   | 1            |
| Deadweight       | 11,121 mt    |
| Lifting capacity | 2 x 80 mt    |
| Cubic capacity   | 518,949 cbft |
| Built            | 2008-2010    |


**BBC HONG KONG TYPE | BBC-11K-120A**


|                  |              |
|------------------|--------------|
| No. of vessels   | 2            |
| Deadweight       | 11,150 mt    |
| Lifting capacity | 2 x 60 mt    |
| Cubic capacity   | 502,810 cbft |
| Built            | 2008         |

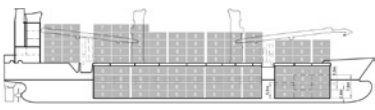

**ACADIA D. TYPE | BBC-11K-80A**


|                  |              |
|------------------|--------------|
| No. of vessels   | 1            |
| Deadweight       | 11,353 mt    |
| Lifting capacity | 2 x 40 mt    |
| Cubic capacity   | 503,833 cbft |
| Built            | 2013         |

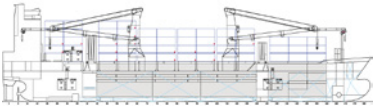

**BBC EAGLE TYPE | BBC-10K-500A**


|                  |              |
|------------------|--------------|
| No. of vessels   | 4            |
| Deadweight       | 10,000 mt    |
| Lifting capacity | 2 x 250 mt   |
| Cubic capacity   | 536,529 cbft |
| Built            | 2008-2010    |

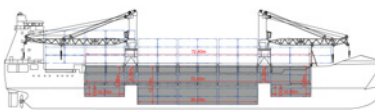


**BBC EVEREST TYPE | BBC-9K-700A**


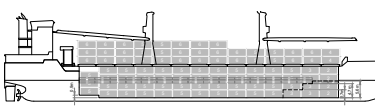
|                  |              |
|------------------|--------------|
| No. of vessels   | 8            |
| Deadweight       | 9,282 mt     |
| Lifting capacity | 2 x 350 mt   |
| Cubic capacity   | 463,293 cbft |
| Built            | 2011-2013    |


**BBC NAPLES | BBC-9K-120A / B**


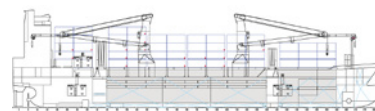
|                  |              |
|------------------|--------------|
| No. of vessels   | 4            |
| Deadweight       | 9,821 mt     |
| Lifting capacity | 2 x 60 mt    |
| Cubic capacity   | 451,898 cbft |
| Built            | 2010-2012    |


**BBC DESTINY TYPE | BBC-8K-500A**


|                  |              |
|------------------|--------------|
| No. of vessels   | 6            |
| Deadweight       | 8,000 mt     |
| Lifting capacity | 2 x 250 mt   |
| Cubic capacity   | 399,973 cbft |
| Built            | 2006-2008    |


**BBC BERGEN | BBC-8K-170A**


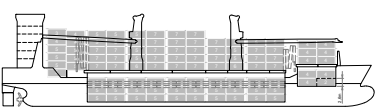
|                  |              |
|------------------|--------------|
| No. of vessels   | 6            |
| Deadweight       | 8,000 mt     |
| Lifting capacity | 2 x 85 mt    |
| Cubic capacity   | 406,365 cbft |
| Built            | 2011-2012    |


**BBC ASIA TYPE | BBC-7K-500A**


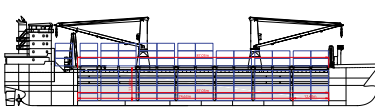
|                  |              |
|------------------|--------------|
| No. of vessels   | 6            |
| Deadweight       | 7,500 mt     |
| Lifting capacity | 2 x 250 mt   |
| Cubic capacity   | 389,040 cbft |
| Built            | 2003-2009    |



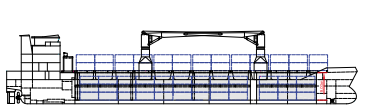
1 vessel

**BBC GDANSK TYPE | BBC-7K-240A**


|                  |              |
|------------------|--------------|
| No. of vessels   | 2            |
| Deadweight       | 7,700 mt     |
| Lifting capacity | 2 x 120 mt   |
| Cubic capacity   | 348,268 cbft |
| Built            | 2008-2009    |


**BBC LIMA TYPE | BBC-7K-160B**


|                  |              |
|------------------|--------------|
| No. of vessels   | 3            |
| Deadweight       | 7,821 mt     |
| Lifting capacity | 2 x 80 mt    |
| Cubic capacity   | 430,463 cbft |
| Built            | 2010-2011    |


**BBC AUSTRALIA | BBC-6K-120A**


|                  |              |
|------------------|--------------|
| No. of vessels   | 3            |
| Deadweight       | 6,300 mt     |
| Lifting capacity | 2 x 60 mt    |
| Cubic capacity   | 329,450 cbft |
| Built            | 2010-2011    |



1 vessel

**SPECIAL EQUIPMENT / FEATURES**


Experience our wide range of shipping solutions, updated positions and sailing schedules at [www.bbc-chartering.com](http://www.bbc-chartering.com)



Follow us on [LinkedIn](https://www.linkedin.com/company/bbc-chartering) and [Instagram](https://www.instagram.com/bbcchartering)

