

BBC-10K-500A



VESSEL NAME	BUILT	IMO NO.	FLAG	VESSEL NAME	BUILT	IMO NO.	FLAG
BBC EAGLE	2008	9407574	Antigua & Barbuda	BBC EDGE	2009	9407598	Antigua & Barbuda
BBC KIMBERLEY	2009	9407586	Antigua & Barbuda	BBC ECHO	2010	9407603	Antigua & Barbuda

MAIN DATA

TYPE

Vessel type	Multipurpose Heavylifter
Classification	Class NK


TONNAGE

Deadweight (summer)	10,000 mt
GT / NT	8,750 / 3,859

DIMENSIONS

Max. draft (summer)	7.70 m
Length o.a.	139.00 m
Length between pp.	131.20 m
Breadth moulded	20.00 m
Depth to main deck	11.30 m
Height above keel	34.85 m

SPEED

Max. speed	16.00 knots
Intermediate speed	14.50 knots
Reduced speed 	13.00 knots

HOLDS / HATCHES / CRANES

CARGO GEAR

Crane manufacturer	TTS	(portside)
Lifting capacity	2 x 250 mt	

CONTAINER CAPACITY

Nominal capacity	628 TEU	
Stackweights on deck	20' = 50.00 mt	40' = 80.00 mt

DECK STRENGTHS

Tanktop	15.00 mt / sqm
Tweendeck	3.50 mt / sqm
Hatchcovers	3.00 mt / sqm

HOLDS / HATCHES

Cargo hold capacity	15,193 cbm	536,529 cbft
Floor space under deck	2,654 sqm	28,567 sqft
Floor space on deck	1,349 sqm	14,524 sqft

SPECIAL EQUIPMENT / FEATURES



Great Lakes fitted



Australia fitted



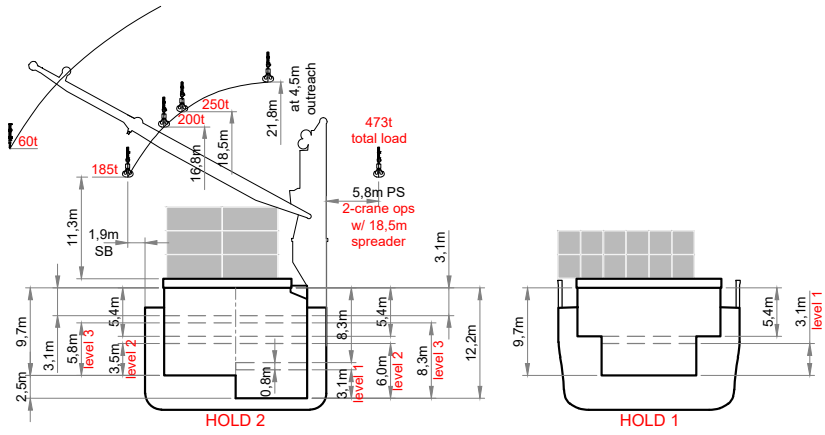
IMO Class 1-9 fitted



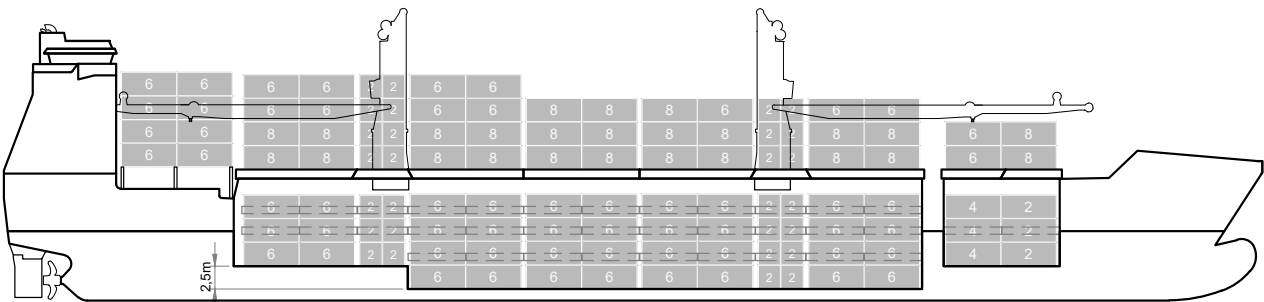
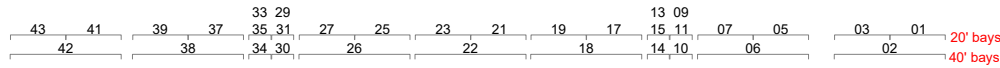
Pontoon type hatch cover (lift-off)



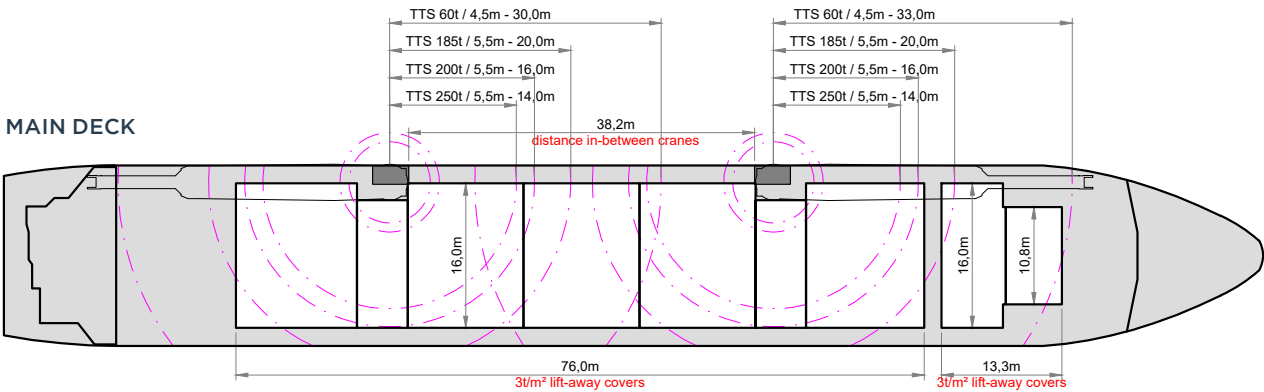
Bow Thruster



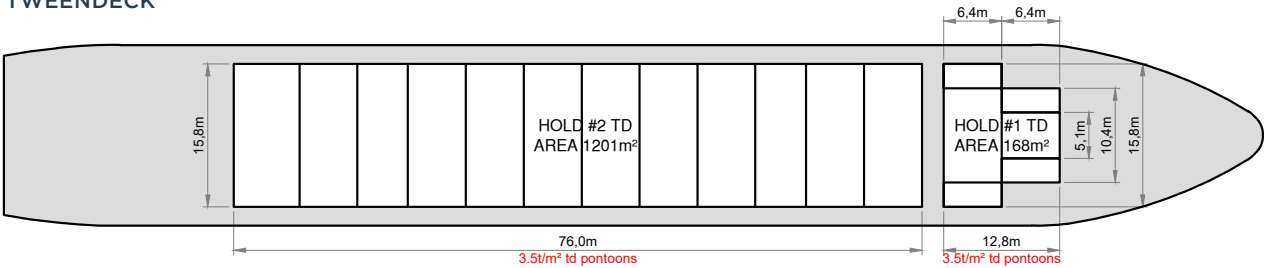
SIDE VIEW



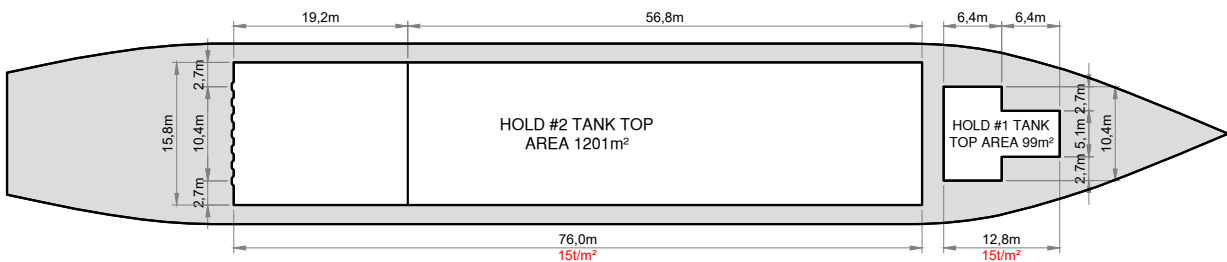
MAIN DECK



TWEENDECK



HOLDS & DOUBLE BOTTOM



Speed figures are calculated basis maximum Beaufort 2, no swell and no adverse currents. Intake is always subject to vessel's stability, trim, permissible weights and is subject to regulations of visibility. Lifting capacity of vessel's cranes is subject to vessel's stability and can depend on cargo/ballast on board. Container data as well as cargo hold capacity assumes tweendeck ashore. All details including speed are given in good faith and can vary on the individual vessels. They are to be considered „about“, are given without guarantee and must not be used as basis for charterparties or contracts without BBC Chartering's explicit written authority.