


BBC-12K-300A



VESSEL NAME	BUILT	IMO NO.	FLAG	VESSEL NAME	BUILT	IMO NO.	FLAG
ARALIA ⁽¹⁾	2007	9357212	Liberia	BBC VERMONT ⁽²⁾	2008	9357236	Antigua & Barbuda
BBC MAINE ⁽²⁾	2007	9357200	Antigua & Barbuda	JANNES ⁽¹⁾	2009	9435129	Antigua & Barbuda
BBC TEXAS ⁽³⁾	2007	9388883	Antigua & Barbuda	PACIFICA ⁽³⁾	2009	9431460	Singapore
PIA ⁽¹⁾	2007	9384318	Antigua & Barbuda	POTENTIA ⁽³⁾	2009	9431472	Singapore
FRIEDA ⁽¹⁾	2008	9435117	Antigua & Barbuda	BBC ALASKA ⁽¹⁾	2010	9453793	Liberia
BBC DAKOTA ⁽³⁾	2008	9388900	Liberia	BBC MARYLAND ⁽²⁾	2010	9433298	Antigua & Barbuda
ERIK ⁽¹⁾	2008	9435105	Antigua & Barbuda	BBC MICHIGAN ⁽²⁾	2010	9501241	Antigua & Barbuda
BBC GEORGIA ⁽²⁾	2008	9357224	Antigua & Barbuda	PELAGICA ⁽³⁾	2010	9453781	Singapore
CLAUDE A. DESGAGNES ⁽¹⁾	2011	9488059	Barbados				

MAIN DATA

TYPE	
Vessel type	Multipurpose Heavyliifter
Classification	⁽¹⁾ DNV ⁽²⁾ Class NK ⁽³⁾ Korean Register
TONNAGE	
Deadweight (summer)	12,780 mt
GT / NT	9,620 / 4,260
DIMENSIONS	
Max. draft (summer)	8.00 m
Length o.a.	138.50 m
Length between pp.	130.50 m
Breadth moulded	21.00 m
Depth to main deck	11.00 m
Height above keel	40.90 m
SPEED	
Max. speed	15.00 knots
Intermediate speed	13.00 knots
Reduced speed 	12.00 knots

HOLDS / HATCHES / CRANES

CARGO GEAR			
Crane manufacturer		NMF	(portside)
Lifting capacity			2 x 150 mt
CONTAINER CAPACITY			
Nominal capacity			665 TEU
At 14 mt homog. loaded			528 TEU
Stackweights on deck	20' =	50.00 mt	40' = 65.00 mt
Stackweights tanktop	20' =	90.00 mt	40' = 120.00 mt
Reefer plugs			50
DECK STRENGTHS			
Tanktop			16.00 mt / sqm
Tweendeck hold 1			2.50 mt / sqm
Tweendeck hold 2+3			4.00 mt / sqm
Hatchcovers			1.75 mt / sqm
HOLDS / HATCHES			
Cargo hold capacity		15,952 cbm	563,340 cbft
Floor space under deck		2,810 sqm	30,247 sqft
Floor space on deck		1,480 sqm	15,931 sqft

SPECIAL EQUIPMENT / FEATURES



Ice Class E3/IA



Grain fitted



Great Lakes fitted



Australia fitted



IMO Class 1-9 fitted



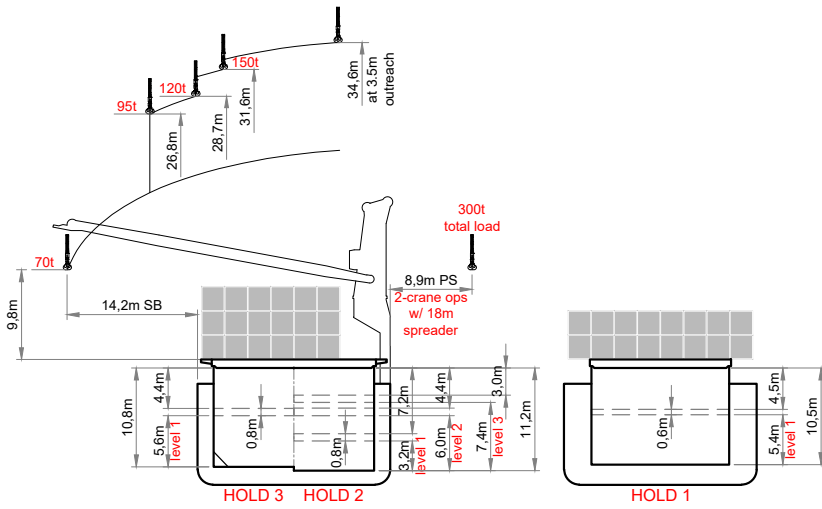
Folding type hatch cover (hydraulic)



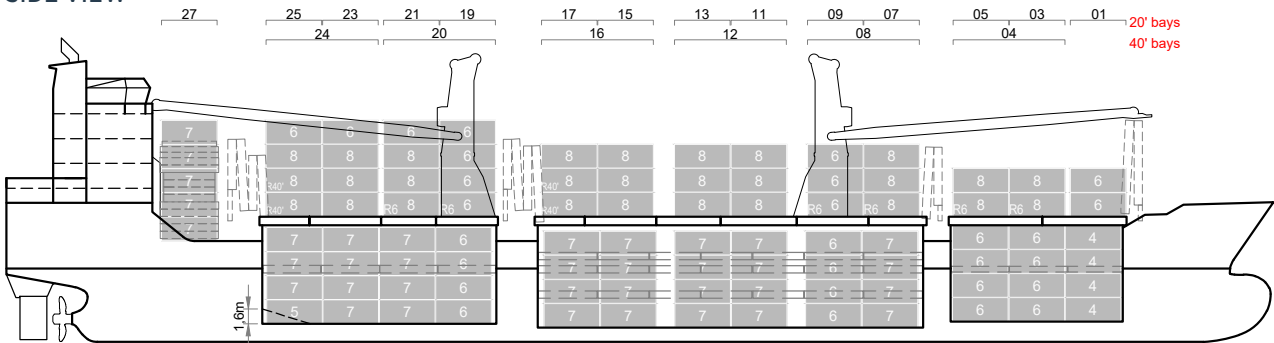
Automatic mode



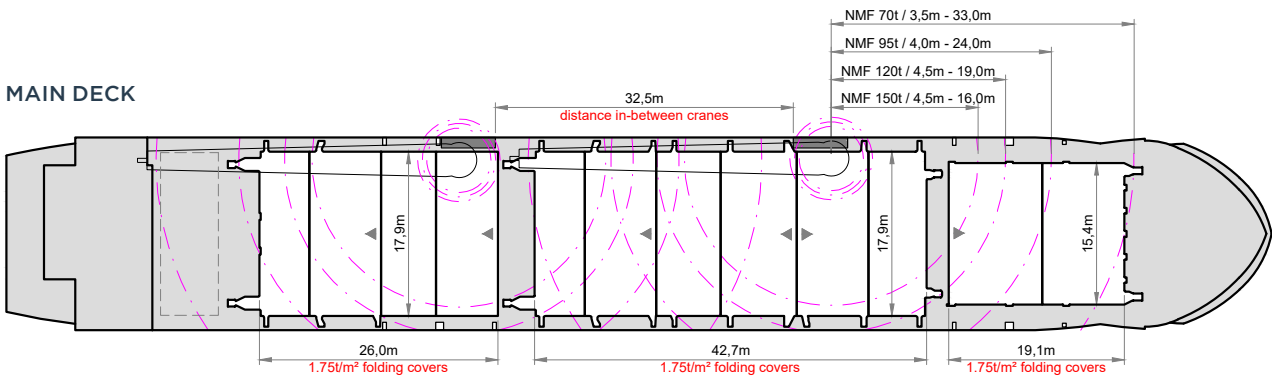
Bow Thruster



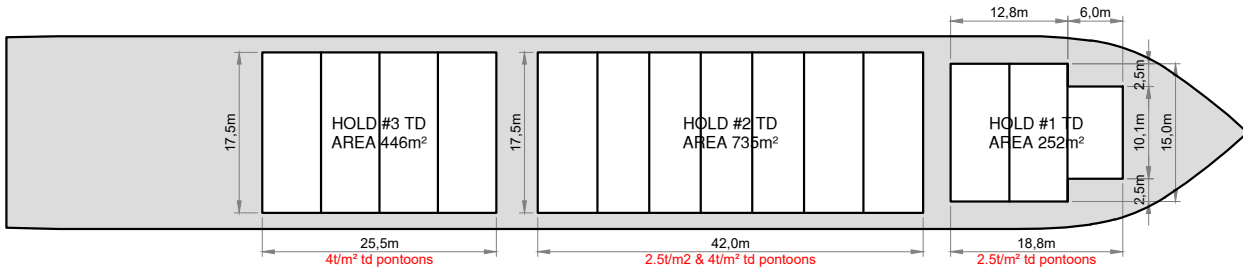
SIDE VIEW



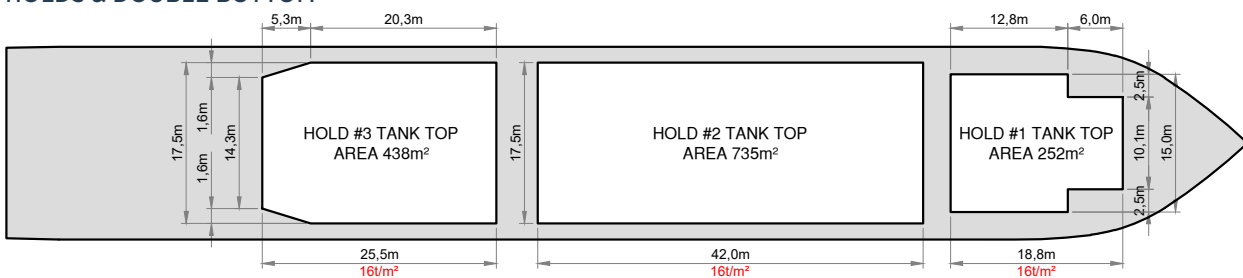
MAIN DECK



TWEENDECK



HOLDS & DOUBLE BOTTOM



Speed figures are calculated basis maximum Beaufort 2, no swell and no adverse currents. Intake is always subject to vessel's stability, trim, permissible weights and is subject to regulations of visibility. Lifting capacity of vessel's cranes is subject to vessel's stability and can depend on cargo/ballast on board. Container data as well as cargo hold capacity assumes tweendeck ashore. All details including speed are given in good faith and can vary on the individual vessels. They are to be considered „about“, are given without guarantee and must not be used as basis for charterparties or contracts without BBC Chartering's explicit written authority.