

BBC-12K-500A




VESSEL NAME	BUILT	IMO NO.	FLAG	VESSEL NAME	BUILT	IMO NO.	FLAG
MIENA DESGAGNES	2017	9700380	Barbados	BBC ST. PETERSBURG	2020	9736200	Antigua & Barbuda
BERTHE A. DESGAGNES	2018	9700392	Barbados	ANNETTE A. DESGAGNES	2020	9736212	Barbados

MAIN DATA

TYPE	
Vessel type	Multipurpose Heavyliifter
Classification	DNV

TONNAGE	
Deadweight (summer)	12,400 mt
GT / NT	11,503 / 4,474

DIMENSIONS	
Max. draft (summer)	8.18 m
Length o.a.	147.00 m
Length between pp.	140.00 m
Breadth moulded	22.80 m
Depth to main deck	11.55 m
Height above keel	40.78 m

SPEED	
Max. speed	16.00 knots
Intermediate speed	14.00 knots
Reduced speed 	13.00 knots

HOLDS / HATCHES / CRANES

CARGO GEAR		
Crane manufacturer	Liebherr	(portside)
Lifting capacity	2 x 250 mt	

CONTAINER CAPACITY			
Nominal capacity	842 TEU		
At 14 mt homog. loaded	541 TEU		
Stackweights on deck	20' = 50.00 mt	40' = 65.00 mt	
Stackweights tanktop	20' = 90.00 mt	40' = 120.00 mt	
Reefer plugs	50		

DECK STRENGTHS	
Tanktop	20.00 mt / sqm
Tanktop in special areas	25.00 mt / sqm
Tweendeck hold 1	4.00 mt / sqm
Tweendeck hold 2	4.00 mt / sqm
Hatchcovers	4.00 mt / sqm
Pontoon hatchcovers	8.00 mt / sqm

HOLDS / HATCHES		
Cargo hold capacity	17,600 cbm	621,537 cbft
Floor space under deck	2,940 sqm	31,645 sqft
Floor space on deck	1,796 sqm	19,332 sqft

SPECIAL EQUIPMENT / FEATURES



Ice Class E3/AI



Grain fitted



Great Lakes fitted



Australia fitted



IMO Class 1-9 fitted



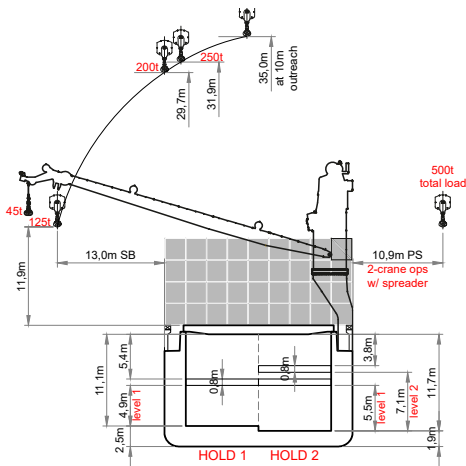
Mix type hatch cover



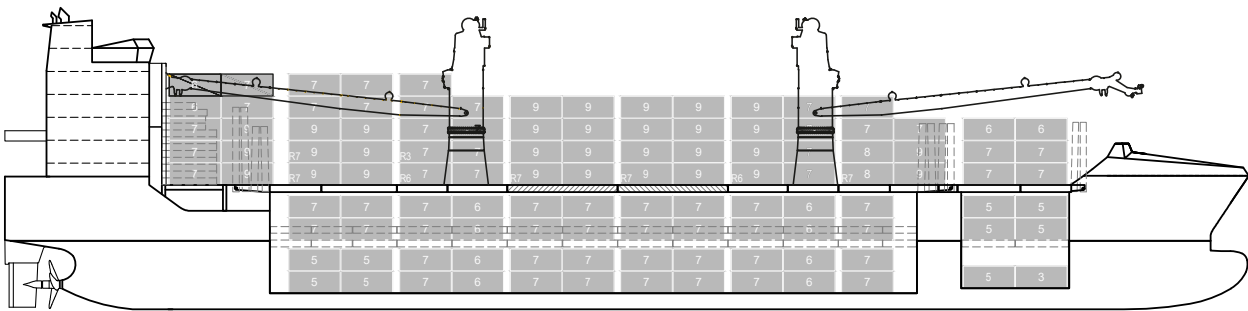
Automatic mode



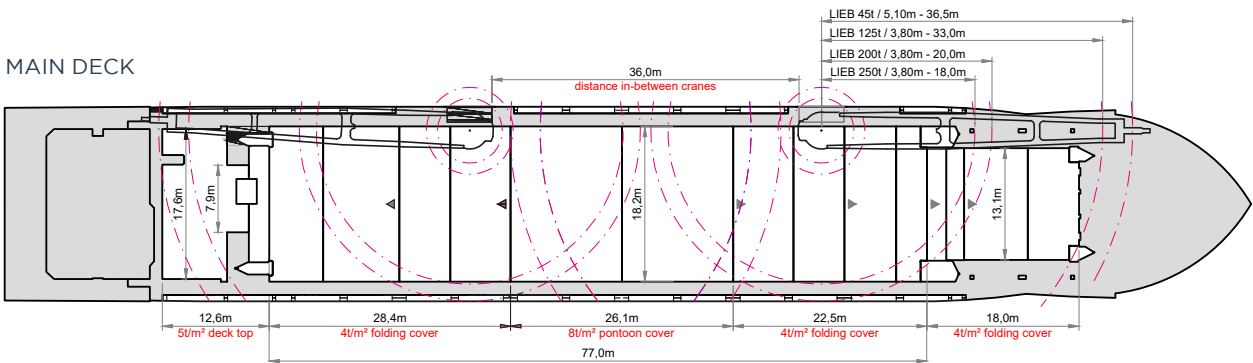
Bow Thruster



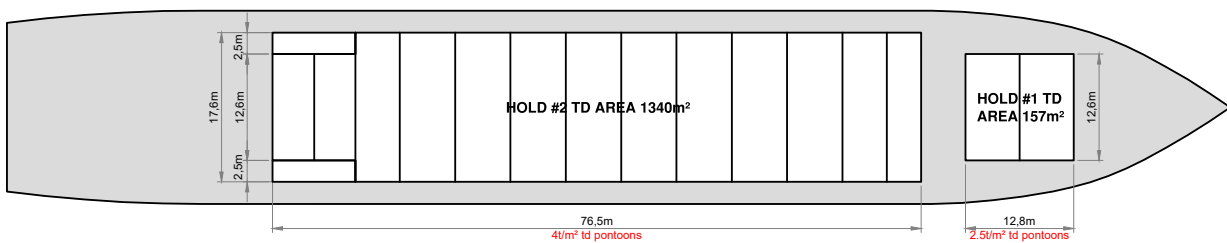
SIDE VIEW



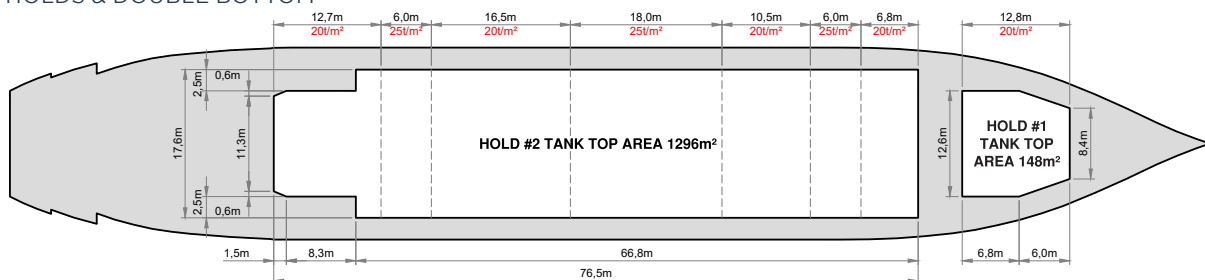
MAIN DECK



TWEEDECK



HOLDS & DOUBLE BOTTOM



Speed figures are calculated basis maximum Beaufort 2, no swell and no adverse currents. Intake is always subject to vessel's stability, trim, permissible weights and is subject to regulations of visibility. Lifting capacity of vessel's cranes is subject to vessel's stability and can depend on cargo/ballast on board. Container data as well as cargo hold capacity assumes tweendeck ashore. All details including speed are given in good faith and can vary on the individual vessels. They are to be considered „about“, are given without guarantee and must not be used as basis for charterparties or contracts without BBC Chartering's explicit written authority.