

# BBC-9K-120B




VESSEL NAME	BUILT	IMO NO.	FLAG	VESSEL NAME	BUILT	IMO NO.	FLAG
BBC NAGASAKI <sup>(2)</sup>	2011	9559872	Antigua & Barbuda	BBC NYHAVN <sup>(1)</sup>	2012	9559896	Antigua & Barbuda
BBC NORFOLK <sup>(1)</sup>	2012	9559884	Antigua & Barbuda				

## MAIN DATA

TYPE	
Vessel type	Multipurpose Tweendecker
Classification	<sup>(1)</sup> Bureau Veritas <sup>(2)</sup> Korean Regis-

TONNAGE	
Deadweight (summer)	9,821 mt
GT / NT	6,351 / 3,617

DIMENSIONS	
Max. draft (summer)	7.73 m
Length o.a.	132.15 m
Length between pp.	124.56 m
Breadth moulded	15.87 m
Depth to main deck	9.65 m
Height above keel	37.50 m

SPEED	
Max. speed	13.50 knots
Intermediate speed	12.50 knots
Reduced speed 	11.50 knots

## HOLDS / HATCHES / CRANES

CARGO GEAR		
Crane manufacturer	Liebherr	(portside)
Lifting capacity	2 x 60 mt	

CONTAINER CAPACITY			
Nominal capacity	474 TEU		
At 14 mt homog. loaded	333 TEU		
Stackweights on deck	20' = 25.00 mt	40' = 40.00 mt	
Stackweights tanktop	20' = 90.00 mt	40' = 100.00 mt	
Reefer plugs	20		

DECK STRENGTHS	
Tanktop	15.00 mt / sqm
Tweendeck	3.50 mt / sqm
Hatchcovers	1.75 mt / sqm

HOLDS / HATCHES		
Cargo hold capacity	12,822 cbm	451,898 cbft
Floor space under deck	2,320 sqm	24,972 sqft
Floor space on deck	1,248 sqm	13,433 sqft

## SPECIAL EQUIPMENT / FEATURES



Ice Class E3/AI



Grain fitted



Great Lakes fitted



Australia fitted



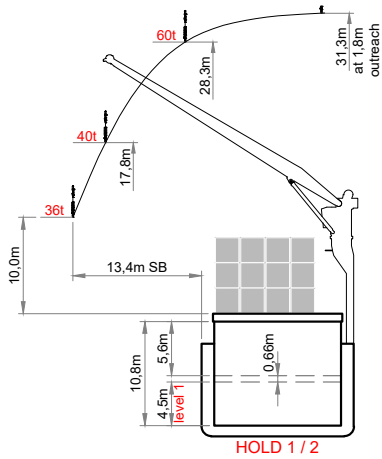
IMO Class 1-9 fitted



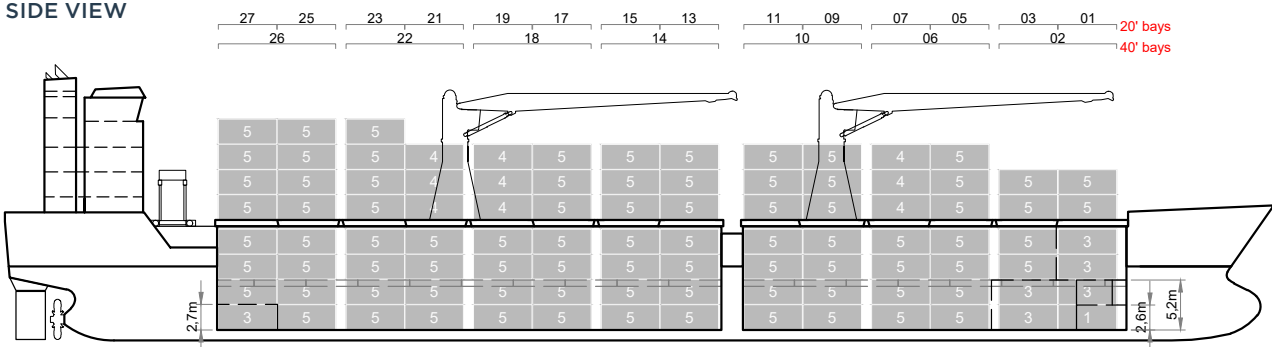
Pontoon type hatch cover (gantry crane)



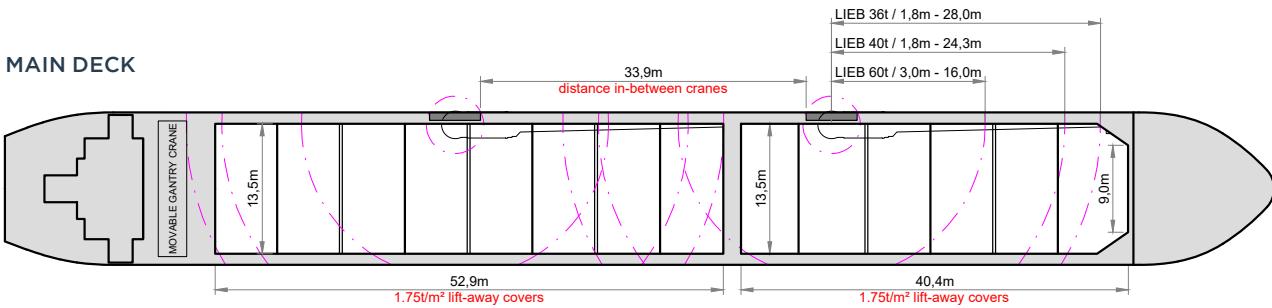
Bow Thruster



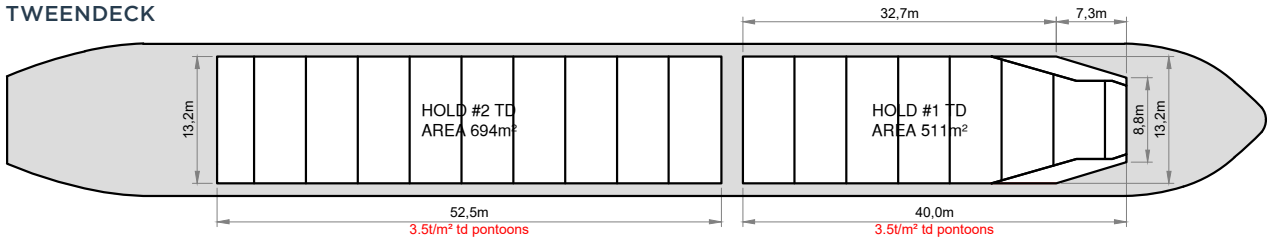
## SIDE VIEW



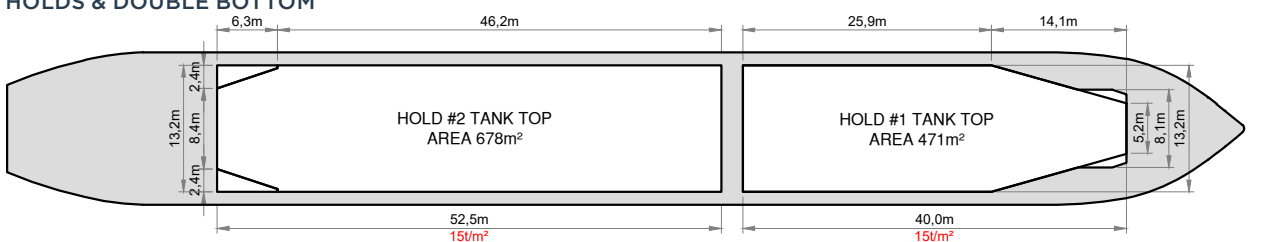
## MAIN DECK



## TWENDECK



## HOLDS & DOUBLE BOTTOM



Speed figures are calculated basis maximum Beaufort 2, no swell and no adverse currents. Intake is always subject to vessel's stability, trim, permissible weights and is subject to regulations of visibility. Lifting capacity of vessel's cranes is subject to vessel's stability and can depend on cargo/ballast on board. Container data as well as cargo hold capacity assumes tweendeck ashore. All details including speed are given in good faith and can vary on the individual vessels. They are to be considered „about“, are given without guarantee and must not be used as basis for charterparties or contracts without BBC Chartering's explicit written authority.