


BBC-24K-200A



| VESSEL NAME | BUILT | IMO NO. | FLAG | VESSEL NAME | BUILT | IMO NO. | FLAG |
|----------------------------|-------|---------|-------------------|------------------------------|-------|---------|-------------------|
| BBC DENMARK ⁽²⁾ | 2012 | 9605891 | Antigua & Barbuda | BBC ELISABETH ⁽¹⁾ | 2013 | 9593660 | Antigua & Barbuda |
| BBC FINLAND ⁽¹⁾ | 2012 | 9593684 | Antigua & Barbuda | BBC ICELAND ⁽²⁾ | 2013 | 9605906 | Antigua & Barbuda |
| BBC NORWAY ⁽¹⁾ | 2012 | 9593658 | Antigua & Barbuda | | | | |

MAIN DATA

| TYPE | |
|---|---|
| Vessel type | Multipurpose Tweendecker |
| Classification | ⁽¹⁾ Lloyd's Register ⁽²⁾ Bureau Veritas |
| TONNAGE | |
| Deadweight (summer) | 24,964 mt |
| GT / NT | 18,189 / 8,440 |
| DIMENSIONS | |
| Max. draft (summer) | 9.81 m |
| Length o.a. | 161.33 m |
| Length between pp. | 152.00 m |
| Breadth moulded | 27.39 m |
| Depth to main deck | 13.50 m |
| Height above keel | 52.30 m |
| SPEED | |
| Max. speed | 15.00 knots |
| Intermediate speed | 13.00 knots |
| Reduced speed  | 11.00 knots |

HOLDS / HATCHES / CRANES

| CARGO GEAR | | | |
|---------------------------------------|------------------------|-----------------|--|
| Crane manufacturer | TTS | (portside) | |
| Lifting capacity | 2 x 100 mt + 1 x 60 mt | | |
| CONTAINER CAPACITY | | | |
| Nominal capacity | 1497 TEU | | |
| Stackweights on deck ⁽¹⁾ | 20' = 50.00 mt | 40' = 65.00 mt | |
| Stackweights on deck ⁽²⁻⁴⁾ | 20' = 60.00 mt | 40' = 85.00 mt | |
| Stackweights tanktop | 20' = 120.00 mt | 40' = 152.50 mt | |
| Reefer plugs | 86 | | |
| DECK STRENGTHS | | | |
| Tanktop | 23.00 mt / sqm | | |
| Tweendeck | 4.00 mt / sqm | | |
| Hatchcovers | 2.50 mt / sqm | | |
| HOLDS / HATCHES | | | |
| Cargo hold capacity | 30,235 cbm | 1,067,880 cbft | |
| Floor space under deck | 4,189 sqm | 45,090 sqft | |
| Floor space on deck | 2,438 sqm | 26,242 sqft | |

SPECIAL EQUIPMENT / FEATURES



Grain fitted



Australia fitted



IMO Class 1-9 fitted



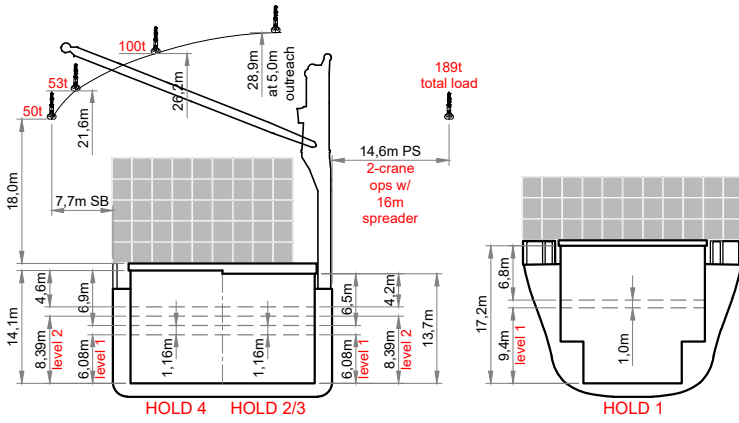
Folding type hatch cover (hydraulic)



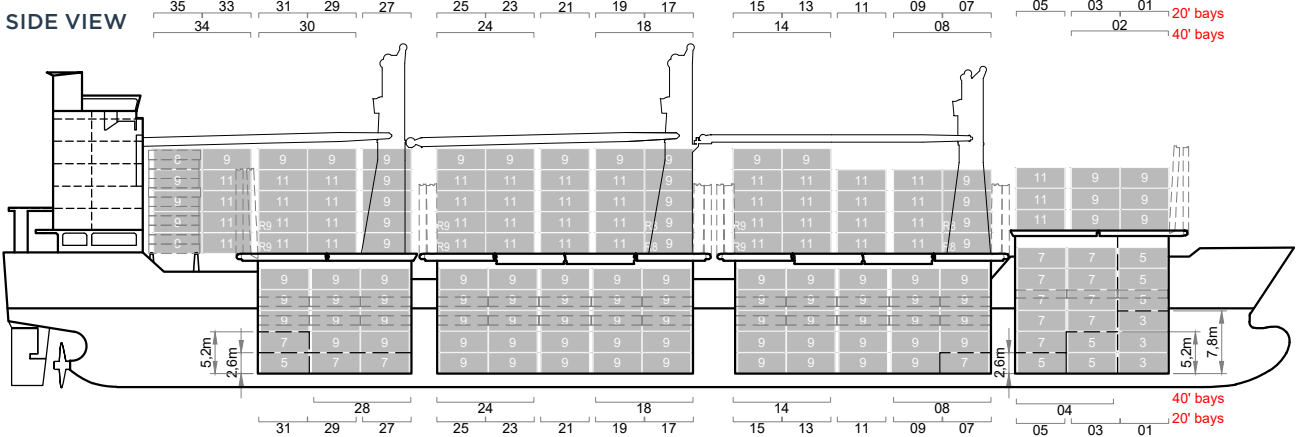
Automatic mode



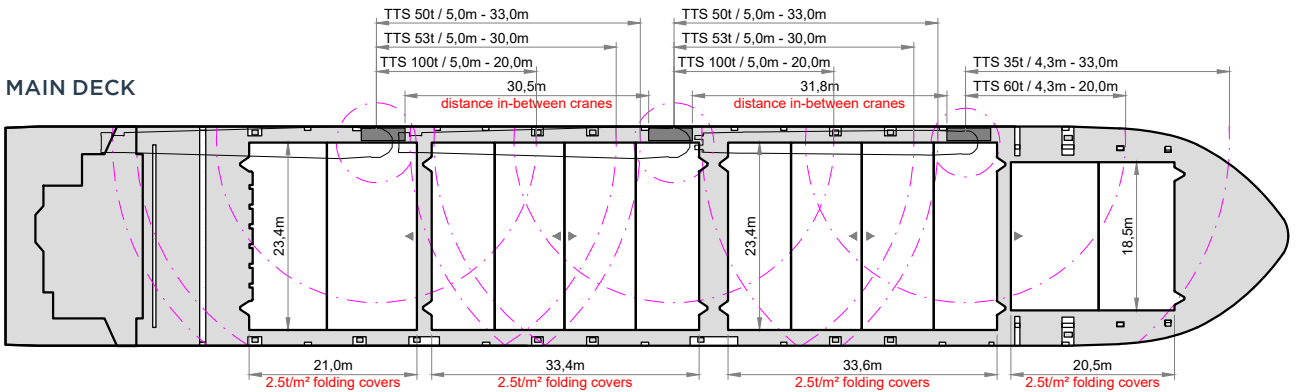
Bow Thruster



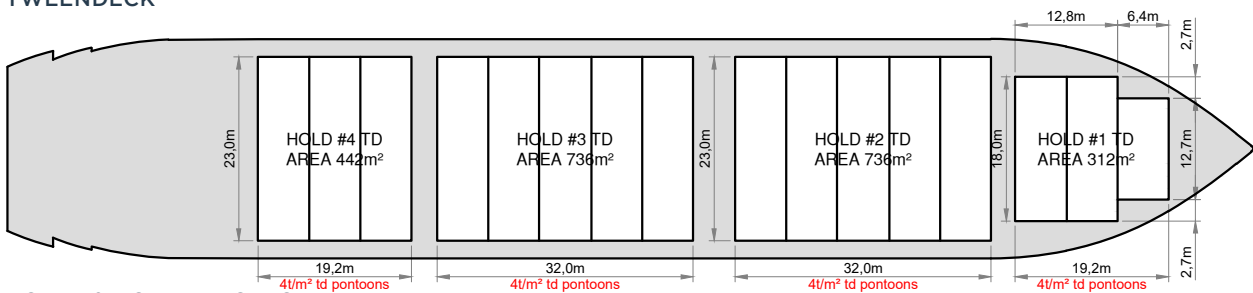
SIDE VIEW



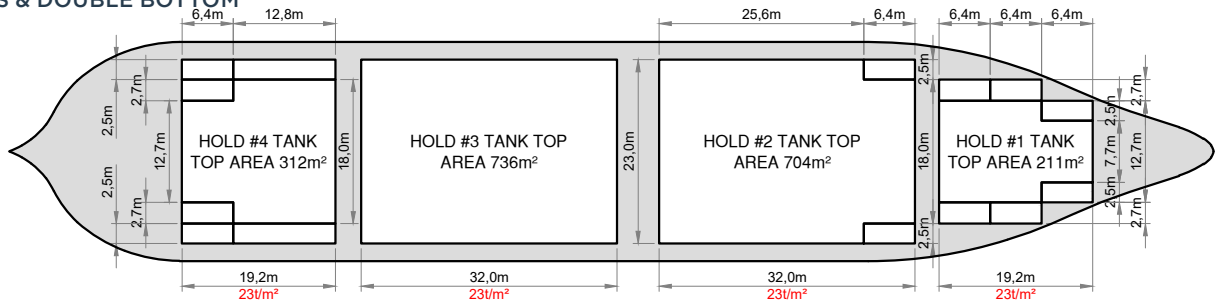
MAIN DECK



TWENDECK



HOLDS & DOUBLE BOTTOM



Speed figures are calculated basis maximum Beaufort 2, no swell and no adverse currents. Intake is always subject to vessel's stability, trim, permissible weights and is subject to regulations of visibility. Lifting capacity of vessel's cranes is subject to vessel's stability and can depend on cargo/ballast on board. Container data as well as cargo hold capacity assumes tween deck ashore. All details including speed are given in good faith and can vary on the individual vessels. They are to be considered „about“, are given without guarantee and must not be used as basis for charterparties or contracts without BBC Chartering's explicit written authority.